

Hampshire Water Transfer and Water Recycling Project Environmental Statement - Figure 11.5 Environmentally sensitive areas within the study area

VOLUME NUMBER: 6

PLANNING INSPECTORATE SCHEME NUMBER: WA010002

APPLICATION DOCUMENT REFERENCE: 6.3

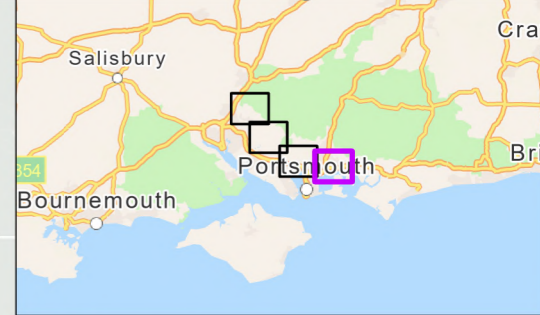
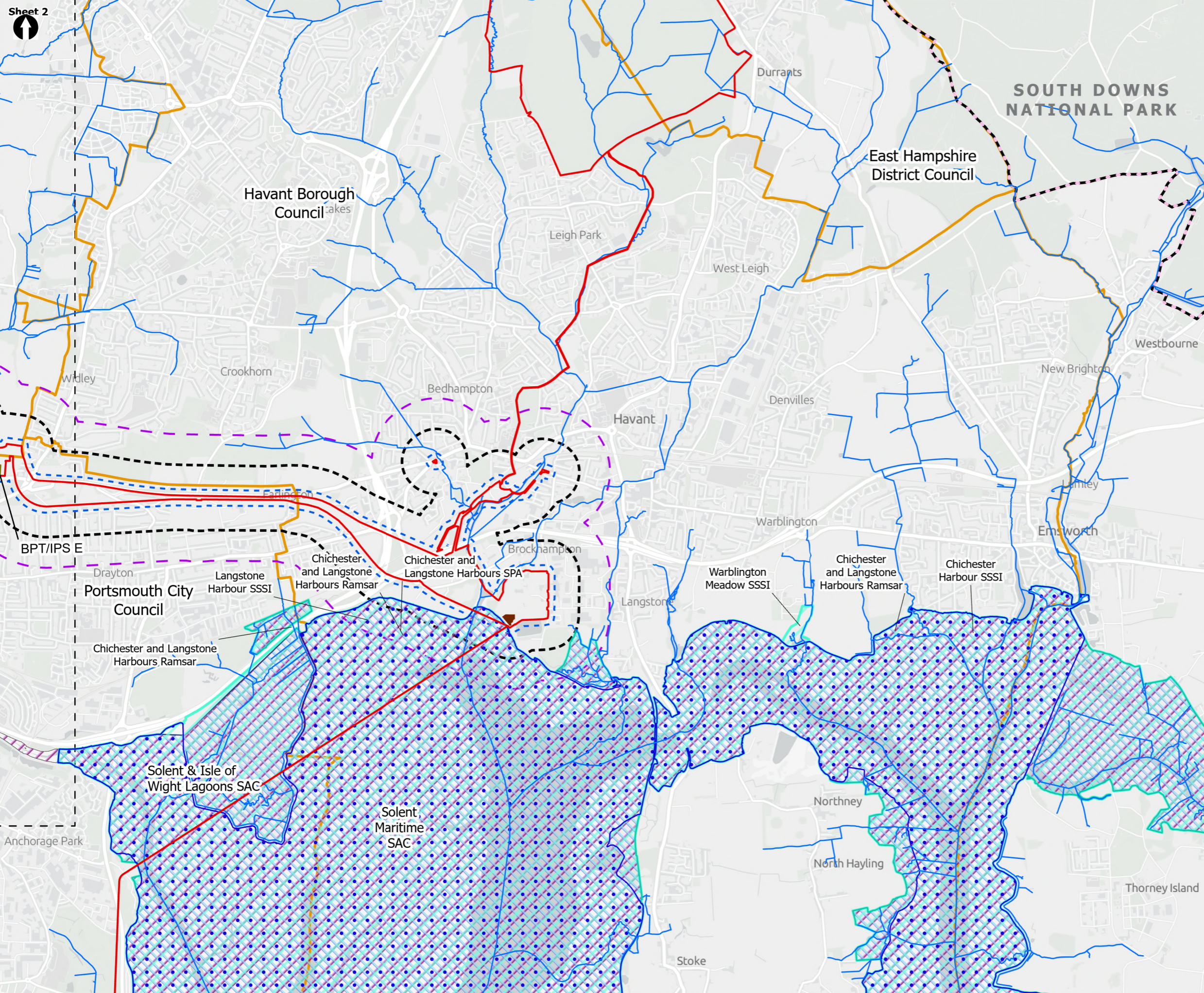
APFP REGULATION: 5(2)(a)

May 2026

Version 0



from
**Southern
Water** 



- Order Limits
- Sheet Extent Boxes 1:30K
- National Parks
- Local planning authorities
- Limits of Deviation for Budds Farm Pumping Station
- Study Areas**
- 50m Study Area
- 250m Study Area
- 500m Study Area
- Rivers**
- Main Rivers and Tributaries
- Designated Sites**
- Special Areas of Conservation (SAC)
- Sites of Special Scientific Interest (SSSI)
- Ramsar Sites
- South Downs National Park Area
- Special Protection Area (SPA)
- Above Ground Plant**
- Break Pressure Tank & Intermediate Pumping Station

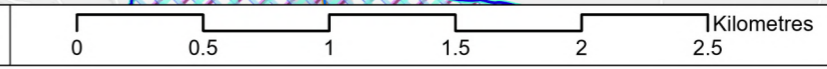
Coordinate system: British National Grid; Datum: OSGB 1936
 Data sources: © Crown copyright and database rights 2026 Ordnance Survey 0100031673. Contains, or is derived from, information supplied by Natural England. © Natural England copyright 2026.
 Contains OS data © Crown Copyright and database right 2026
 Contains data from OS Zoomstack. Sources: Esri, TomTom, Garmin, FAO, NOAA, USGS, © OpenStreetMap contributors, and the GIS User Community

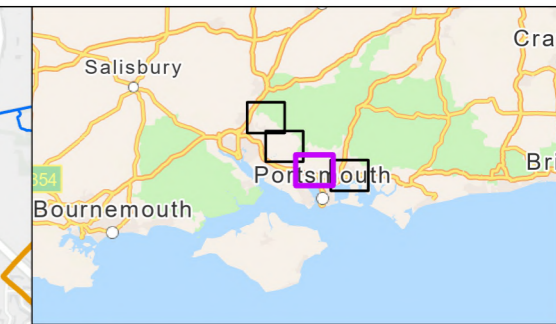
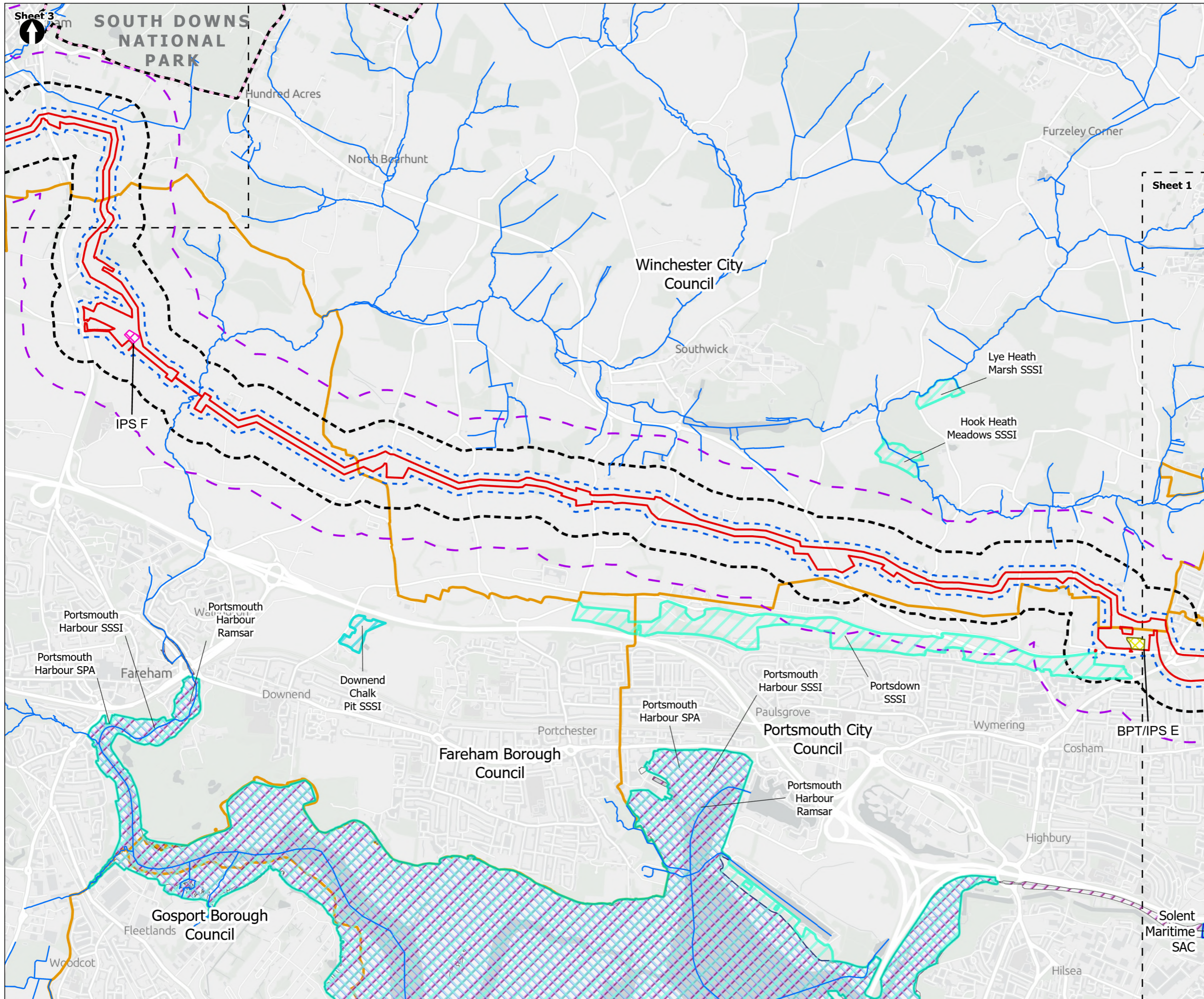
PROJECT TITLE
 Hampshire Water Transfer and Water Recycling Project



Figure 11.5
 Environmentally sensitive areas within the study area
 Sheet 1 of 4

Drawn DL	GIS Checked MW	Checked MP	Approved AK
Scale at A3 1:30,000	Status Final	Revision 05	Security STD





- Order Limits
- Sheet Extent Boxes 1:30K
- National Parks
- Local planning authorities
- Study Areas**
- 50m Study Area
- 250m Study Area
- 500m Study Area
- Rivers**
- Main Rivers and Tributaries
- Designated Sites**
- Special Areas of Conservation (SAC)
- Sites of Special Scientific Interest (SSSI)
- Ramsar Sites
- South Downs National Park Area
- Special Protection Area (SPA)
- Geology**
- Geological SSSI (Downend Pit)
- Above Ground Plant**
- Break Pressure Tank & Intermediate Pumping Station
- Intermediate Pumping Station

Coordinate system: British National Grid; Datum: OSGB 1936
 Data sources: © Crown copyright and database rights 2026 Ordnance Survey 0100031673. Contains, or is derived from, information supplied by Natural England. © Natural England copyright 2026.
 Contains OS data © Crown Copyright and database right 2026
 Contains data from OS Zoomstack. Sources: Esri, TomTom, Garmin, FAO, NOAA, USGS, © OpenStreetMap contributors, and the GIS User Community

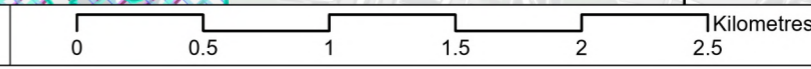
PROJECT TITLE
 Hampshire Water Transfer and Water Recycling Project

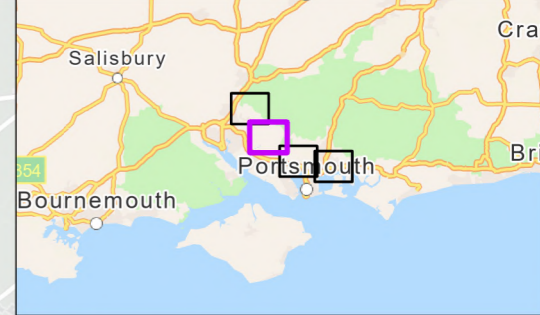
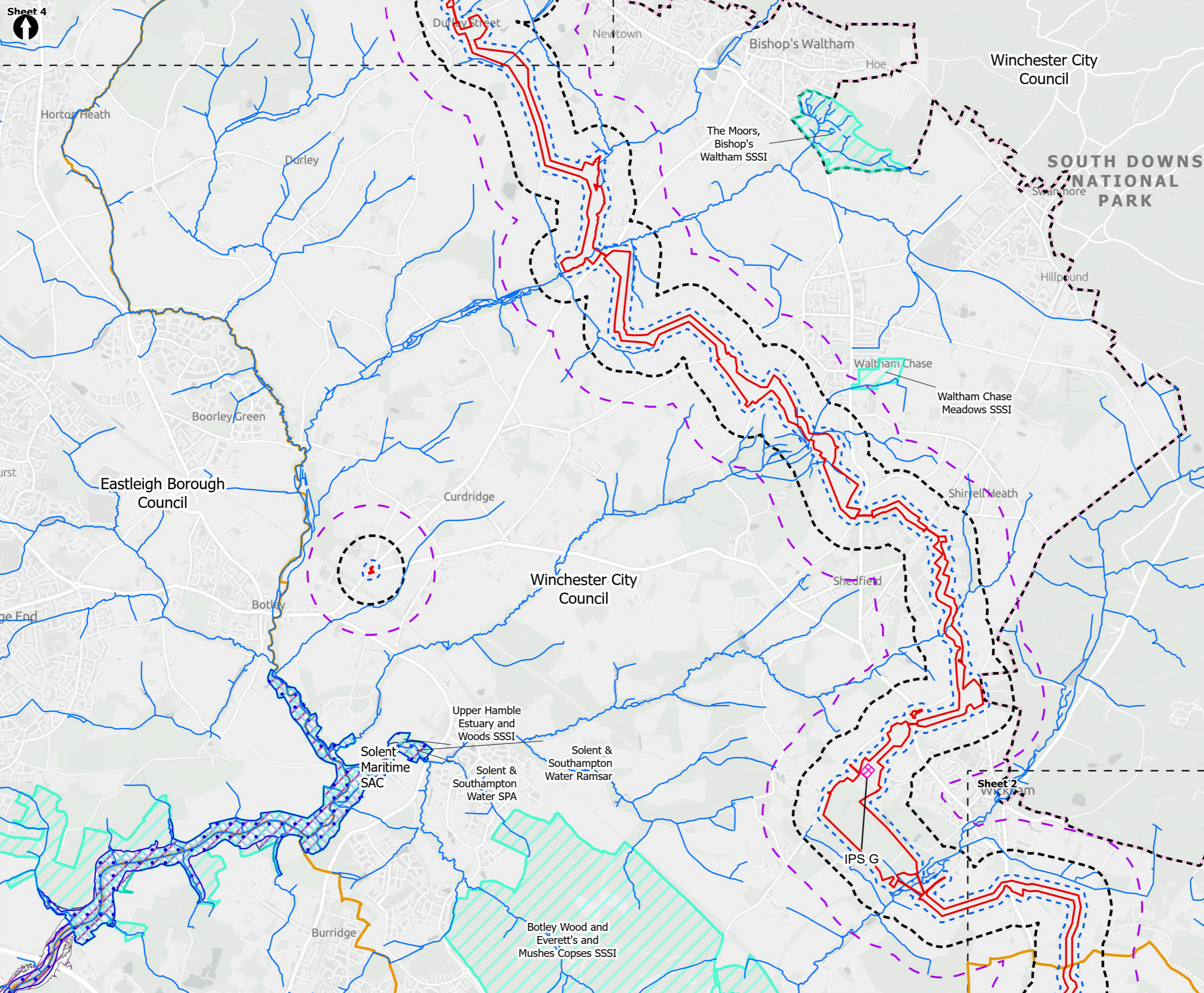


Figure 11.5
 Environmentally sensitive areas within the study area
 Sheet 2 of 4

Drawn DL	GIS Checked MW	Checked MP	Approved AK
Scale at A3 1:30,000	Status Final	Revision 05	Security STD

Drawing Number
 PC5223-RHD-ES-ZZ-D-Z-0013





- Order Limits
- Sheet Extent Boxes 1:30K
- National Parks
- Local planning authorities
- Study Areas**
- 50m Study Area
- 250m Study Area
- 500m Study Area
- Rivers**
- Main Rivers and Tributaries
- Designated Sites**
- Special Areas of Conservation (SAC)
- Sites of Special Scientific Interest (SSSI)
- Ramsar Sites
- South Downs National Park Area
- Special Protection Area (SPA)
- Above Ground Plant**
- Intermediate Pumping Station

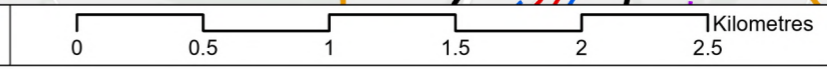
Coordinate system: British National Grid; Datum: OSGB 1936
 Data sources: © Crown copyright and database rights 2026 Ordnance Survey 0100031673. Contains, or is derived from, information supplied by Natural England. © Natural England copyright 2026.
 Contains OS data © Crown Copyright and database right 2026
 Contains data from OS Zoomstack. Sources: Esri, TomTom, Garmin, FAO, NOAA, USGS, © OpenStreetMap contributors, and the GIS User Community

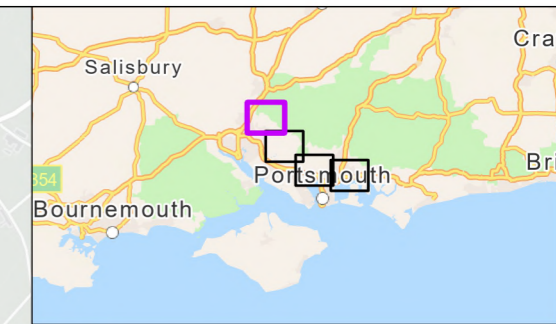
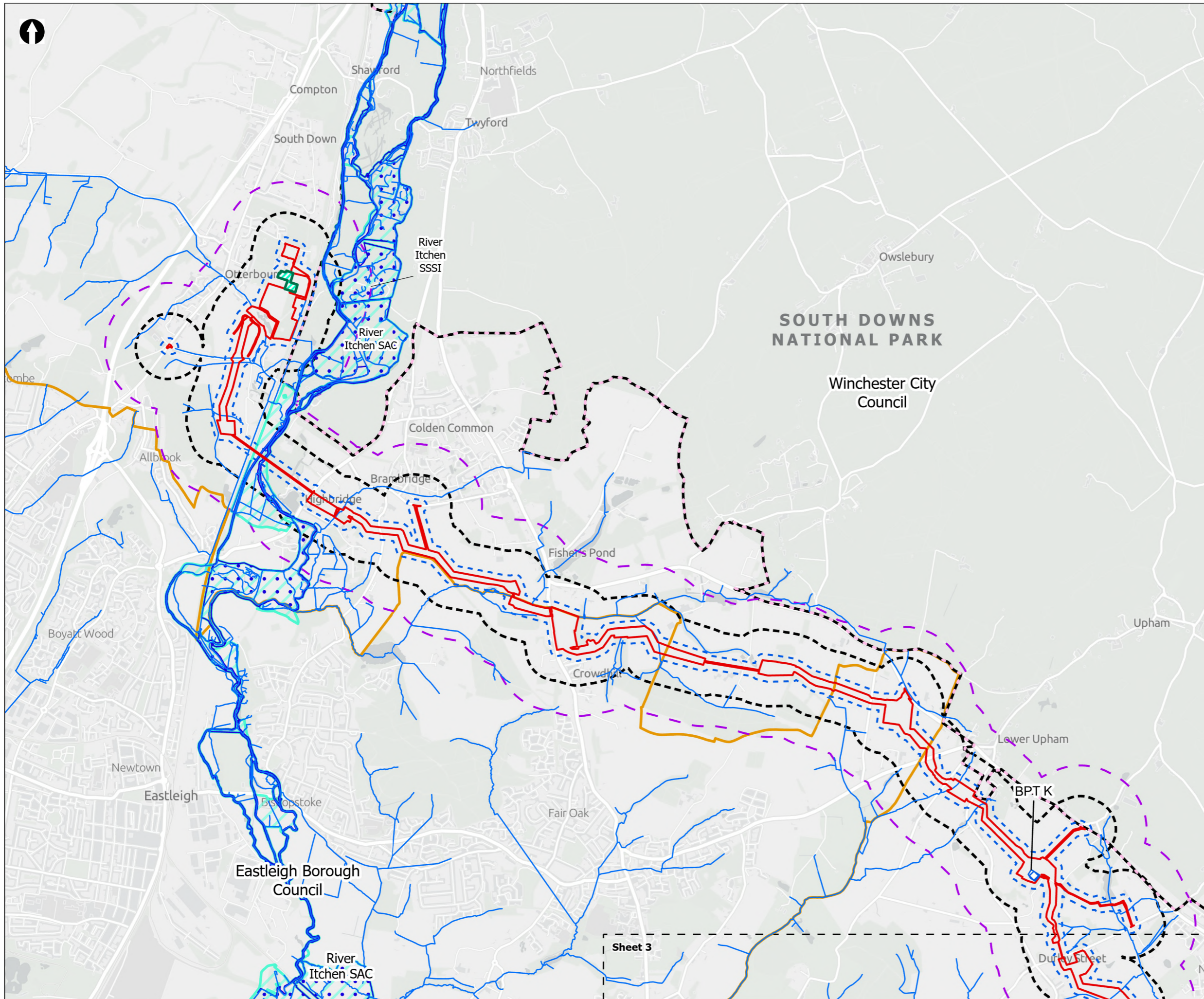
PROJECT TITLE
 Hampshire Water Transfer and Water Recycling Project



Figure 11.5
 Environmentally sensitive areas within the study area
 Sheet 3 of 4

Drawn DL	GIS Checked MW	Checked MP	Approved AK
Scale at A3 1:30,000	Status Final	Revision 05	Security STD





- Order Limits
- Sheet Extent Boxes 1:30K
- National Parks
- Local planning authorities
- Limits of Deviation for Otterbourne INNS Treatment Plant
- Study Areas**
- 50m Study Area
- 250m Study Area
- 500m Study Area
- Rivers**
- Main Rivers and Tributaries
- Designated Sites**
- Special Areas of Conservation (SAC)
- Sites of Special Scientific Interest (SSSI)
- South Downs National Park Area
- Above Ground Plant**
- Break Pressure Tank

Coordinate system: British National Grid; Datum: OSGB 1936
 Data sources: © Crown copyright and database rights 2026 Ordnance Survey 0100031673. Contains, or is derived from, information supplied by Natural England. © Natural England copyright 2026.
 Contains OS data © Crown Copyright and database right 2026
 Contains data from OS Zoomstack. Sources: Esri, TomTom, Garmin, FAO, NOAA, USGS, © OpenStreetMap contributors, and the GIS User Community

PROJECT TITLE
 Hampshire Water Transfer and Water Recycling Project



Figure 11.5
 Environmentally sensitive areas within the study area
 Sheet 4 of 4

Drawn DL	GIS Checked MW	Checked MP	Approved AK
Scale at A3 1:30,000	Status Final	Revision 05	Security STD

Drawing Number
PC5223-RHD-ES-ZZ-D-Z-0013

